

www.smsfoundation.org

S M Sehgal Foundation is a public, charitable trust registered in India since 1999.

Tel: +1-515-288 0010, Fax: +1-515-288 4501, Email: sf-usa@smsfoundation.org

100 Court Ave, # 211, Des Moines, IA 50309-2256, USA

Sehgal Foundation

Tel: +91-40-3071 3312, Fax: +91-40-30713044/75 Email: pvanissekhar@smsfoundation.org

Building 303, Room # 9-13, ICRISAT, Patancheru, Hyderabad, Telangana 502 324, India

Crop Improvement Research

Tel: +91-124-474 4100, Fax: +91-124-474 4123, Email: smsf@smsfoundation.org

Plot No. 34, Sector 44, Institutional Area, Gurgaon, Haryana 122003, India

S M Sehgal Foundation



SEHGAL
FOUNDATION

TOGETHER
WE EMPOWER
RURAL INDIA



CALENDAR

ANNUAL REPORT 2014-15

EMPOWERING RURAL INDIA



SEHGAL
FOUNDATION

Vision

We envision every person across rural India empowered to lead a more secure, prosperous, and dignified life.

Mission

Our mission is to strengthen community-led development initiatives to achieve positive social, economic, and environmental change across rural India.

What We Do

We work together with rural communities to create sustainable programs for managing water resources, increasing agricultural productivity, and strengthening rural governance. The team's emphasis on gender equality and women's empowerment is driven by the realization that human rights are central to developing every person's potential.



Since 1999 Sehgal Foundation has worked to make a positive difference in the lives of the rural poor who seek and deserve secure, prosperous, and dignified lives. With this commitment and our desire to accelerate the very slow process of development, we moved forward with a dedicated team, learning along the way, shifting gears as needed, and building on our successes. This past year we continued to expand village activities and mobilization drives to empower rural communities in Haryana, Rajasthan, and Bihar. In concert with the extended 15-year celebration, the team took the opportunity to note our achievements, reflect back, and look ahead to evaluate new areas for further development. Foundation teams are studying community development priorities in more districts in Bihar and Rajasthan for opportunities to create meaningful change with partner-donor support.

Empowering rural women is central to our mission for strengthening community-led development and achieving positive social, economic, and environmental change. By focusing attention on the advancement of gender equity, Sehgal Foundation empowers villagers and their institutions to drive change in their communities. To support the growth of women leaders, the Sehgal Foundation team helped organize *mahila sangathans* (women's collectives) for women from 100 villages. As the collectives register as societies, open bank accounts, and create a small corpus to fund their activities, groups of women are making positive changes in their villages. Because of this citizen participation, several Mewat villages are on a path to becoming demonstration models. In addition, by training other NGOs, collaborating with government, the corporate sector, and academia, and by

participating in shared exchanges within community media networks, we are increasing our impact on other organizations as well as the communities we jointly serve.

With support from government and private donors, the foundation has worked alongside communities to manage water resources, increase agricultural productivity, and strengthen rural governance. Because community ownership is critical to the sustainability of village improvements, the Sehgal Foundation team has helped organize village development committees that operate, manage, and assist with all projects and partnerships to assure that improvements are maintained and that citizens are engaged.

The foundation team was happy to receive a prestigious Millennium Alliance Award in 2014 for the innovation of the pressurized recharge well. This replicable model has significant potential and is being tested in other contexts. The innovation was selected for a "lightning talk" at the United Nations Solutions Summit in September 2015. We were heartened to see that the top six of seventeen UN Sustainable Development Goals—a "universal set of goals, targets, and indicators" for UN members to use in framing their agendas and political policies over the next fifteen years—match the vision, mission, and programs of Sehgal Foundation.

There is plenty of work to be done to meet our goals. Please partner with us to help empower rural communities in India!

SURI SEHGAL
FOUNDER AND CHAIRMAN, SEHGAL FOUNDATION



SEHGAL
FOUNDATION



IN 2014-15

5,733 *sushasan* champions were trained in Mewat.

106,803 people were reached in community meetings.

CITIZEN PARTICIPATION

Village leadership schools (VLS) and block leadership schools (BLS) formed under Sehgal Foundation's *Sushasan Abhi* (Good Governance Now!) initiative mobilize citizens to come together as a collective. VLS brings 20-25 people together in each village to impart knowledge and information regarding pivotal government programs and the details of grievance redressal mechanisms. These active and trained villagers, called *sushasan* champions, work to improve village governance.

January 2016

SUNDAY	MONDAY	TUESDAY	WEDNESDAY	THURSDAY	FRIDAY	SATURDAY
					New Year's Day 1	2
3	4	5	6	7	8	9
10	11	12	13	14	15	16
17	18	19	20	21	22	23
31 24	25	Republic Day 26	27	28	29	30

● New Moon ◐ First Quarter ◑ Last Quarter ○ Full Moon

December 2015

S	M	T	W	T	F	S
		1	2	3	4	5
6	7	8	9	10	11	12
13	14	15	16	17	18	19
20	21	22	23	24	25	26
27	28	29	30	31		

February 2016

S	M	T	W	T	F	S
	1	2	3	4	5	6
7	8	9	10	11	12	13
14	15	16	17	18	19	20
21	22	23	24	25	26	27
28	29					



SEHGAL
FOUNDATION



DEVELOPMENT THROUGH COLLECTIVE ACTION





Strengthening Village Level Institutions initiative helped the women in village institutions in Mewat to organize into block-level *sangathans* (women's collectives). The collectives include members of *panchayats* (village councils), school management committees, and village health, sanitation, and nutrition committees. The aim of *sangathans* is to lead the development process in the villages and improve the existing governance situation.

In 2014-15

607 women were active in five *mahila sangathans*.

February 2016

SUNDAY	MONDAY	TUESDAY	WEDNESDAY	THURSDAY	FRIDAY	SATURDAY
	 1	2	3	4	5	6
7	 8	9	10	11	12	13 World Radio Day
14	 15	16	17	18	19	20 World Day of Social Justice
21	 22	23	24	25	26	27
28	29					

 New Moon  First Quarter  Last Quarter  Full Moon

January 2016

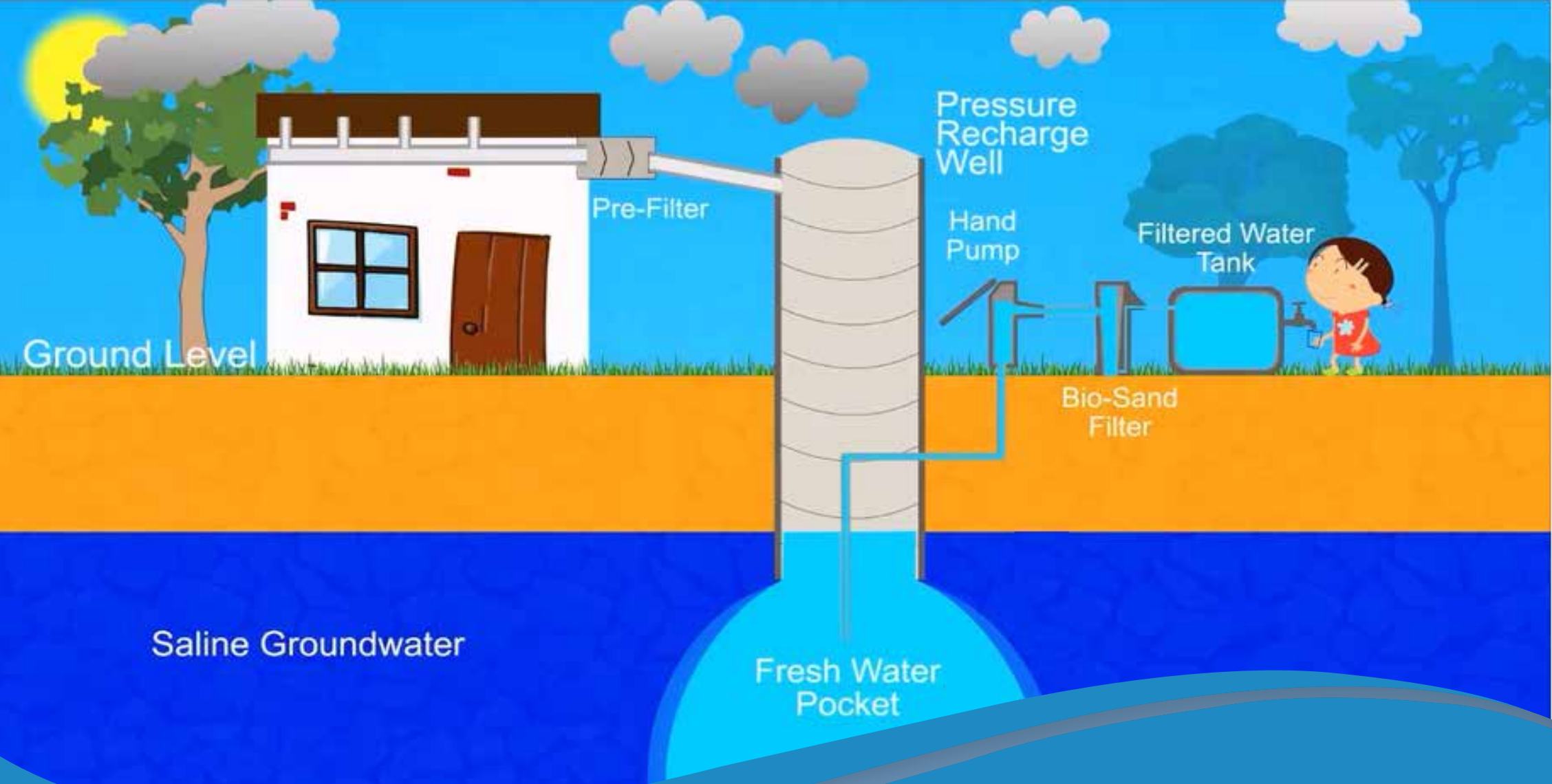
S	M	T	W	T	F	S
					1	2
3	4	5	6	7	8	9
10	11	12	13	14	15	16
17	18	19	20	21	22	23
24	25	26	27	28	29	30
31						

March 2016

S	M	T	W	T	F	S
		1	2	3	4	5
6	7	8	9	10	11	12
13	14	15	16	17	18	19
20	21	22	23	24	25	26
27	28	29	30	31		



SEHGAL
FOUNDATION



INNOVATIVE SOLUTIONS FOR SALINE GROUNDWATER AREAS

Rainwater is an ultimate and renewable source of freshwater in saline groundwater areas. One of our innovative solutions, creating a freshwater pocket within the saline aquifer through rainwater harvesting, won a Millennium Alliance Award in 2014 and was featured at the United Nations Solutions Summit in September 2015.

IN 2014-15

22 rainwater harvesting systems were constructed in schools, and **14** in households.

March 2016

SUNDAY	MONDAY	TUESDAY	WEDNESDAY	THURSDAY	FRIDAY	SATURDAY
		1	2	3	4	5
6	Mahashivratri 7	International Women's Day 8	9	10	11	12
13	14	15	16	17	18	19
20	21	World Water Day 22	23	Holi 24	Good Friday 25	26
27	28	29	30	31		

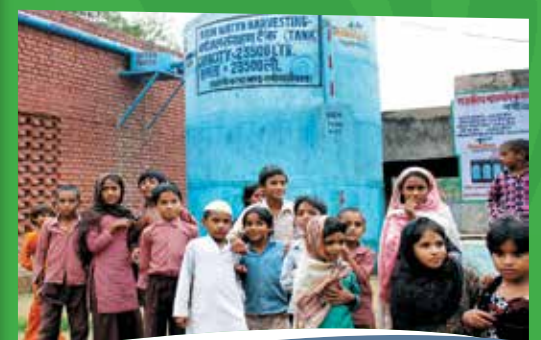
New Moon
 First Quarter
 Last Quarter
 Full Moon

February 2016

S	M	T	W	T	F	S
	1	2	3	4	5	6
7	8	9	10	11	12	13
14	15	16	17	18	19	20
21	22	23	24	25	26	27
28	29					

April 2016

S	M	T	W	T	F	S
					1	2
3	4	5	6	7	8	9
10	11	12	13	14	15	16
17	18	19	20	21	22	23
24	25	26	27	28	29	30



SEHGAL
FOUNDATION



WOMEN FARMERS AS DECISION MAKERS

We work with women farmers to become empowered as decision makers. The foundation partners with corporations on two women-centered agricultural projects that focus on improving farm livelihoods. The foundation demonstrates the use of sustainable farming practices, including soil testing and balanced nutrient applications, the use of suitable seed varieties, appropriate seed rate, and pest management, in order to help farmers improve soil health, conserve water, and increase crop yields.

IN 2014-15

Women farmers were trained in better farming practices in **28** villages in Alwar.

April 2016

SUNDAY	MONDAY	TUESDAY	WEDNESDAY	THURSDAY	FRIDAY	SATURDAY
					1	2
3	4	5	6	7	8	9
10	11	12	13	14	15 Ram Navami	16
17	18	19	20	21	22 Earth Day	23
24	25	26	27	28	29	30

New Moon
 First Quarter
 Last Quarter
 Full Moon

March 2016

S	M	T	W	T	F	S
		1	2	3	4	5
6	7	8	9	10	11	12
13	14	15	16	17	18	19
20	21	22	23	24	25	26
27	28	29	30	31		

May 2016

S	M	T	W	T	F	S
1	2	3	4	5	6	7
8	9	10	11	12	13	14
15	16	17	18	19	20	21
22	23	24	25	26	27	28
29	30	31				



SEHGAL
FOUNDATION



COMMUNITY RADIO PROMOTES GOOD GOVERNANCE

Kanoon ki Baat (Talk on Law), a radio program series with National Legal Services Authority, helped build awareness about availability of free legal services.

Another pilot initiative, *Humara Ration Humara Haq* (Our Ration, Our Right), engaged community radio in five states in a collaboration to broadcast twelve episodes on Public Distribution System informing listeners about the entitlements guaranteed under the National Food Security Act 2013.

IN 2014-15

Radio broadcasts reached **225** villages.

May 2016

SUNDAY	MONDAY	TUESDAY	WEDNESDAY	THURSDAY	FRIDAY	SATURDAY
1	2	3	4	5	6	7
8	9	10	11	12	13	14
15	16	17	18	19	20	21
22	23	24	25	26	27	28
29	30	31				

● New Moon ◐ First Quarter ◑ Last Quarter ○ Full Moon

April 2016

S	M	T	W	T	F	S
					1	2
3	4	5	6	7	8	9
10	11	12	13	14	15	16
17	18	19	20	21	22	23
24	25	26	27	28	29	30

June 2016

S	M	T	W	T	F	S
			1	2	3	4
5	6	7	8	9	10	11
12	13	14	15	16	17	18
19	20	21	22	23	24	25
26	27	28	29	30		



SEHGAL
FOUNDATION



STRENGTHENING DEVELOPMENT THROUGH PARTICIPATORY RESEARCH

Sehgal Foundation's Rural Research team engages rural communities in studies on evidence-based impact assessments that are used as practical tools to measure and evaluate outcomes, assess learning, inform future actions, and determine potential for additional development and policy research.

IN 2014-15

9 research studies were conducted, including baseline surveys, thematic studies, and impact assessments.

June 2016

SUNDAY	MONDAY	TUESDAY	WEDNESDAY	THURSDAY	FRIDAY	SATURDAY
			1	2	3	4
World Environment Day 5	6	7	8	9	10	11
12	13	14	15	16	17	18
19	20	21	22	23	24	25
26	27	28	29	30		

● New Moon ◐ First Quarter ◑ Last Quarter ○ Full Moon

May 2016

S	M	T	W	T	F	S
1	2	3	4	5	6	7
8	9	10	11	12	13	14
15	16	17	18	19	20	21
22	23	24	25	26	27	28
29	30	31				

July 2016

S	M	T	W	T	F	S
					1	2
3	4	5	6	7	8	9
10	11	12	13	14	15	16
17	18	19	20	21	22	23
24	25	26	27	28	29	30
31						



SEHGAL
FOUNDATION



INFORMATION COMMUNICATION TECHNOLOGY FOR GOOD GOVERNANCE

Sehgal Foundation uses information communication technology tools to help bridge the information gap among villagers. The Citizen Information and Support Center (CISC) set up in Nuh, Mewat, enables citizens to access information on key government programs. Villagers call on a toll-free phone number to ask questions, learn about formalities for accessing entitlements, and receive information about the functions and contact information of local government offices and administration.

IN 2014-15

The CISC responded to the **1,764** calls received and provided further support to 406 villagers seeking guidance.

July 2016

SUNDAY	MONDAY	TUESDAY	WEDNESDAY	THURSDAY	FRIDAY	SATURDAY
					1	2
3	4	5	Id-ul-Fitr 6	7	8	9
10	11	12	13	14	15	16
17	18	19	20	21	22	23
31 24	25	26	27	28	29	30

● New Moon ◐ First Quarter ◑ Last Quarter ○ Full Moon

June 2016

S	M	T	W	T	F	S
			1	2	3	4
5	6	7	8	9	10	11
12	13	14	15	16	17	18
19	20	21	22	23	24	25
26	27	28	29	30		

August 2016

S	M	T	W	T	F	S
	1	2	3	4	5	6
7	8	9	10	11	12	13
14	15	16	17	18	19	20
21	22	23	24	25	26	27
28	29	30	31			



SEHGAL
FOUNDATION



ACCESSING WATER

Sehgal Foundation is working to improve access to water by augmenting groundwater levels with the help of check dams, contour trenches, nallah bunds, dug well recharging, pressurized recharge wells, and pond development. Trained village water committees and user groups, with women participants, effectively manage water resources and maintain the structures for long-term sustainability.

IN 2014-15

29 recharge wells and **6** check dams for water augmentation were completed.

August 2016

SUNDAY	MONDAY	TUESDAY	WEDNESDAY	THURSDAY	FRIDAY	SATURDAY
	1	2	3	4	5	6
7	8	9	10	11	12	13
14	Independence Day 15	16	17	Raksha Bandhan 18	19	20
21	22	23	24	Janmashtami 25	26	27
28	29	30	31			

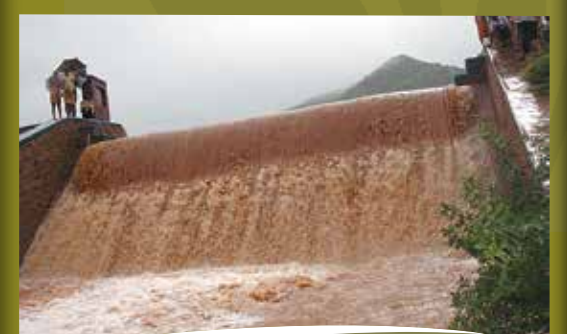
New Moon
 First Quarter
 Last Quarter
 Full Moon

July 2016

S	M	T	W	T	F	S
					1	2
3	4	5	6	7	8	9
10	11	12	13	14	15	16
17	18	19	20	21	22	23
24	25	26	27	28	29	30
31						

September 2016

S	M	T	W	T	F	S
				1	2	3
4	5	6	7	8	9	10
11	12	13	14	15	16	17
18	19	20	21	22	23	24
25	26	27	28	29	30	



SEHGAL
FOUNDATION



DEVELOPING LOW-COST TECHNOLOGIES FOR SAFE DRINKING WATER

Each year many lives are lost due to waterborne diseases like diarrhea and pneumonia. The stainless steel biosand filter developed by Sehgal Foundation removes biological contamination, iron, and suspended impurities from water to make it safe for drinking and other uses. The filter can also be adapted for arsenic removal. It has no operation and maintenance cost and works under the force of gravity without using any form of energy.

IN 2014-15

222 water literacy sessions were held.

September 2016

SUNDAY	MONDAY	TUESDAY	WEDNESDAY	THURSDAY	FRIDAY	SATURDAY
				●		
				1	2	3
4	5	6	7	International Literacy Day 8	9	10
11	Id-ul-Zuha (Bakrid) 12	13	14	15	16	17
18	19	20	21	22	23	24
25	26	27	28	29	30	

● New Moon ◐ First Quarter ◑ Last Quarter ○ Full Moon

August 2016

S	M	T	W	T	F	S
	1	2	3	4	5	6
7	8	9	10	11	12	13
14	15	16	17	18	19	20
21	22	23	24	25	26	27
28	29	30	31			

October 2016

S	M	T	W	T	F	S
						1
2	3	4	5	6	7	8
9	10	11	12	13	14	15
16	17	18	19	20	21	22
23	24	25	26	27	28	29
30	31					



SEHGAL
FOUNDATION



In 2014-15

Individual donors' contributions supported water improvements in five villages.

OUR DONORS MAKE A DIFFERENCE

Sehgal Foundation, based in Des Moines, Iowa, USA, is a 501(c) (3) tax-exempt private foundation that was established in 1998. The US team works with communities in Iowa and other states to support the work of S M Sehgal Foundation in India. We thank all our donors for supporting us to make a positive difference in the lives of rural people. The pages ahead present a comprehensive list of donors, alongside our institutional partners.

October 2016

SUNDAY	MONDAY	TUESDAY	WEDNESDAY	THURSDAY	FRIDAY	SATURDAY
						1
Gandhi Jayanti 2	3	4	5	6	7	8
9	10	Dussehra 11	12	13	14	International Rural Women's Day 15
16	International Day for Eradication of Poverty 17	18	19	20	21	22
Deepawali 30 23	31 24	25	26	27	28	29

● New Moon ● First Quarter ● Last Quarter ○ Full Moon

September 2016

S	M	T	W	T	F	S
				1	2	3
4	5	6	7	8	9	10
11	12	13	14	15	16	17
18	19	20	21	22	23	24
25	26	27	28	29	30	

November 2016

S	M	T	W	T	F	S
		1	2	3	4	5
6	7	8	9	10	11	12
13	14	15	16	17	18	19
20	21	22	23	24	25	26
27	28	29	30			



SEHGAL
FOUNDATION



IN 2014-15

- Evaluation of hybrids and inbred lines continued to progress at target locations for yield and combining ability respectively. Screening of public lines and breeding material for leafy diseases is continued in the hot spot location.
- Kasetsart University of Thailand and Sehgal Foundation signed a memorandum of understanding on the exchange of germplasm.

CROP IMPROVEMENT RESEARCH FOR HIGHER YIELDS

Sehgal Foundation crop improvement research unit housed at ICRISAT, Hyderabad, is recognized as a Scientific and Industrial Research Organization by the Council of Scientific and Industrial Research.

November 2016

SUNDAY	MONDAY	TUESDAY	WEDNESDAY	THURSDAY	FRIDAY	SATURDAY
		1	2	3	4	5
6	7	8	9	10	11	12
13	14	15	16	17	18	19
20	21	22	23	24	25	26
27	28	29	30			

● New Moon ● First Quarter ● Last Quarter ○ Full Moon

October 2016

S	M	T	W	T	F	S
						1
2	3	4	5	6	7	8
9	10	11	12	13	14	15
16	17	18	19	20	21	22
23	24	25	26	27	28	29
30	31					

December 2016

S	M	T	W	T	F	S
				1	2	3
4	5	6	7	8	9	10
11	12	13	14	15	16	17
18	19	20	21	22	23	24
25	26	27	28	29	30	31



SEHGAL
FOUNDATION



PROMOTING SUSTAINABLE AGRICULTURAL PRACTICES

IN 2014-15

3,277 crop demonstrations and **176** livestock nutrients demonstrations took place.

Sehgal Foundation helps to foster rural prosperity by empowering small landholder farmers to help them identify and utilize sustainable agricultural methods and access available government subsidies. Our projects provide training to improve soil health, conserve water, and increase crop yields to create overall improved productivity and farm income. The training also emphasizes livestock management, including complete nutrition, vaccination, breed improvement, and insurance for farm animals.

December 2016

SUNDAY	MONDAY	TUESDAY	WEDNESDAY	THURSDAY	FRIDAY	SATURDAY
				1	2	3
4	5	6	7	8	9	10
11	12	13	14	15	16	17
18	19	20	21	22	23	24
Christmas Governance Day 25	26	27	28	29	30	31

● New Moon ◐ First Quarter ◑ Last Quarter ○ Full Moon

November 2016

S	M	T	W	T	F	S
		1	2	3	4	5
6	7	8	9	10	11	12
13	14	15	16	17	18	19
20	21	22	23	24	25	26
27	28	29	30			

January 2017

S	M	T	W	T	F	S
1	2	3	4	5	6	7
8	9	10	11	12	13	14
15	16	17	18	19	20	21
22	23	24	25	26	27	28
29	30	31				



SEHGAL
FOUNDATION

FINANCIALS 2014-15

In FY 2014-15, the Sehgal Foundation, USA, grants to S M Sehgal Foundation amounted to US\$ 1.96 million (Rs 118,830,671). S M Sehgal Foundation also received funding from other organizations amounting to US\$ 539,210 (Rs. 32,773,198).

These grants and other income (interest and office space rental) were used for water management (25%); agricultural development (7%); rural research (7%); good rural governance (20%); communications and resource mobilization (7%); crop improvement research (11%); general administration (8%) and maintenance of office buildings (15%).

ABRIDGED BALANCE SHEET AS ON 31 MARCH 2015

Amount in ‘000

Particulars	Current Year	Current Year	Prev. Year	Prev. Year
	Amount (Rs)	Amount (US\$)	Amount (Rs)	Amount (US\$)
Assets				
Fixed assets	312,207	5,137	317,975	5,483
Loans and advances	11,387	187	8,482	146
Current assets	71,514	1,177	50,759	875
Income and expenditure account balance				
Total	395,108	6,501	377,216	6,504
Liabilities				
Corpus fund	1	1	1	1
Current liabilities	49,916	821	46,012	793
Income and expenditure account balance	345,191	5,679	331,204	5,710
Total	395,108	6,501	377,216	6,504

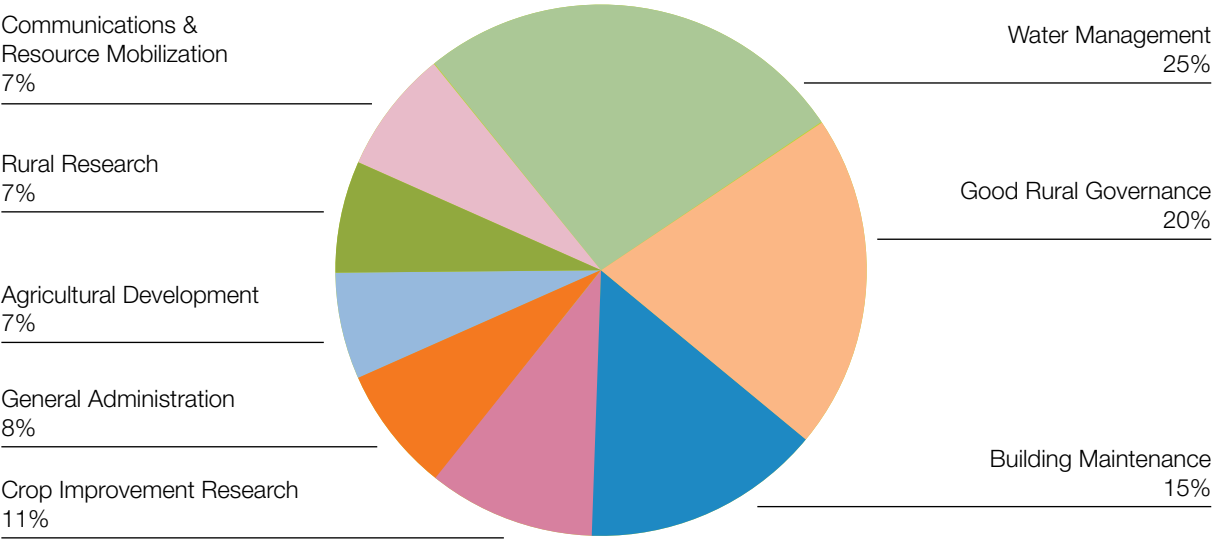
S. V. Advani	Jan Leemans
Ashish Agarwal	Bernard and Dana Leman
Rakesh Anand	Pramod and Prachi Mahajan
Rick Anand	Aparna Mahajan
Debra D and Bruce Ansley	Arun and Vijaylakshmi Maheshwari
Sabina Arora	Nancy Mahindru
Association of Boards of Certification	BP and Nirmala Makkapati
Prasant Atluri	Sravan K Mandumula
Ajay and Sujata Avasthi	Amit and Rittu Manekta
Rekha Basu	MMInvestment-Natasha Marwaha
Chandramohan P Batra Trust	David Moss
Nandita Bedi	Pooja O. Murada
Mona Bhaskar DDS PC	Gopika and Nagendra Myneni
D. K. and Renuka Bhatnagar	Nithya Myneni
Paul and Susan Bishop	Varun Myneni
BNY Mellon Wealth Management	Padma C. Nadella
Radhakrishna and Praveen Brahmarouthu	Aarti Nayar
Robert and Joy Carter	G. R. Neumann and Elizabeth M. Neumann
Fernando Javier Castro	Murali Krishna Paladugu
V Rao Chalasani and Purna Chalasani	Srinivas Pathapati
Ram and Padma Chatrath	Murali Penubothu
John and Lori Chesser	Dan Petersen Construction LLC
Suman and Om Chhabra	Krishna Potluri
Chungath Family Foundation	Amit and Prajakta Pradhan
Jeff and Abigail Chungath	The Prairie Strategy Group Ltd
Ryan Clutter	P.C. Prasad
Beth and Michael Colwell	Karanjit and Parsanta Puri
Marly Cornell and Ernie Feil	Shakti Rathore
Dipanwita Das	Madan Rengarajan
Manimala Das	Santosh Sabharwal
Satyabrata Das	Amrata Sahasrabudhe
Jil Degarmo	Ramnik Sandhu
Krishna and Nirmala Devineni	Sushanta and Aditi Sarkar
Peter and Viera DeWald	Prem Velayudhan and Priyanka Das Sarma
	Vasudha Satsangi

ABRIDGED INCOME AND EXPENDITURE ACCOUNT FOR THE YEAR ENDED 31 MARCH 2015

Amount in ‘000

Particulars	Current Year	Current Year	Prev. Year	Prev. Year
	Amount (Rs)	Amount (US\$)	Amount (Rs)	Amount (US\$)
Income				
Self Generated Income				
Rent, interest and other receipts	38,256	629	39,114	673
Grants				
Indian sources	15,061	248	15,976	275
International sources	142,042	2,337	106,837	1,842
Total	195,359	3,214	161,927	2,790
Expenditure				
Program	119,790	1,971	99,866	1,722
Management	32,995	543	36,914	636
Others	28,587	470	31,027	535
Total	181,372	2,984	167,807	2,893
(Deficit)/Surplus	13,987	230	(5,880)	(103)

EXPENDITURE DURING FY 2014-15 US\$ 2.5 MILLION (Rs 153 MILLION)



WE THANK OUR INDIVIDUAL AND ONLINE DONORS

Ketan and Leena Dhadphale	Jane Schukoske
Kamajit Dhaliwal	Rajat Jay and Veena Sehgal
Mridul Dhaniwala	Suri and Edda Sehgal
Tej and Karen Dhawan	Raman Sehgal
Vaso and Mirjana Dobrosavljevic	Linda J Semon Trust
Patricia Eames	Karthik Seshan
Nilam Engstrom	Chandrakant Shah
Janet and Curtis Gage	Deval and Yogesh Shah
Dave and Jyoti Gidvani	Arun and Anshu Sharma
Jeffrey Alan Gold	Prem and Mohini Sharma
Simmy Goswami	H B Sharma
Bibekananda Guru	Naresh Sharma
Thomas and Mary Hagemann	Vaishal and Aanal Sheth
Chad and Sonu Hansen	Patsy and John Shors
Linda E. Heller	J Shukla
Matthais Manz and Perette Manz-Hendrich	Ashok and Smita Siddhanti
Alifiya Hirani	Parvinder Singh
Richard Hobbs	Prachi Singh
Alice Huang	Punm Singh
Ito Inc	Neha Singh
Satchidanand and Amrata Isloor	Raunak Singh
Kim and Yashi Israni	Rajendra and Kay Sinha
Umamaheshvar Mathrubutham and Raj Iyer	Ravindran Perumal and Ritika Sinha
Takumi and Doris M. Izuno	Skasewa
Akash J	Saurabh Sood
Sunita Jain	Leo Smith and Heather Steans
Abhi Jain	Lakshmi Subramanyam
Aruna Jampala	Chakradhar Sunkavalli
Gregory J. Johansen	Mohan Sunkavalli
Elaine F. Julstrom	Azad C. Sunkavalli and Dhanamjaya Sunkavalli
Arun and Saatchi Kalra	Krishna Rao V. Sunkavalli and Lakshmi S. Sunkavalli
Jagdish Kanwar	Carl and Mary Syversen
Rajan and Dimple Kapoor	Vidya and Sudesh Taneja
Sam Kapoor	Taroon V Bidar and Seema Taroon
Kevin Kennedy	Mukesh Tayal (Shanti Investment Partners)
Anish and Anita Keshwani	Payal and Bhavesh Vadhani
Kay Kiefer	Wilfriede Van Assche
Klaus Koehler	Archana Verma
Suryaprakash Kopparapu	VW Advisors I.LC
Shivram and Meena Krishnan	Santokh and Sandeep Walha
Subhash and Seema Kshetrapal	Kan Wang
Shyamli and Ajit Kumar	William and Mary Woodward
Maneesh Kumar	
Suryasen Kundu	

Partnerships

Partnerships at a Glance (April 2014 – March 2015)

Program	Partnering Organization	Project / Title	Duration
Water Management	Chungath Family Fund, USA	Rooftop rainwater harvesting system in Akleempur village, Mewat, Haryana	March–August 2014
	Coca-Cola India Foundation	Watersheds and community water conservation in select villages of Mewat	April 2011–September 2015
	Department of Science and Technology, Ministry of Science and Technology, Government of India	Rainwater based community managed sustainable solution for selected water scarce villages of Mewat	July 2012–August 2015
	Federation of Indian Chambers of Commerce and Industry for Millennium Alliance'	Pressurized recharge wells: Ensuring water availability in saline water areas	November 2014–November 2017
	Government and People of Japan (The Embassy of Japan in India)	Construction of check dam at Rawli village, Mewat	March 2013–April 2014
	Heather and Leo Smith Fund, USA	Construction of water storage tanks in Mundaka and Chahalka villages in Mewat to ensure easy access to water	January–March 2015
	Iowa, Des Moines Community Fund, USA	Installation of rooftop rainwater harvesting system in government primary and middle school in village Ujina, Mewat	March–August 2014
	Leena Dhadphale Family Fund, USA	Installation of rooftop rainwater harvesting system in government primary and middle school in village Bajhera, Mewat	January–September 2014
	The Coca-Cola Foundation, USA	Integrated water management for improved livelihoods and food security in select villages of Alwar, Rajasthan	December 2013–March 2017
	The Mosaic Company Foundation, USA	Construction of check dam for rainwater harvesting at Devi Mandir Khola, Khohar village, Alwar	December 2013–December 2014
Agricultural Development	Varun Myneni Fund, USA	Installation of rooftop rainwater harvesting system in government primary and middle school in village Lafuri, Mewat	March–August 2014
	K+S Kali GmbH Fertilizers (India) Pvt Ltd	<i>Unnat Krishi</i> : Empowering rural women by adopting sustainable farming practices for income enhancement in rural areas of Alwar	June 2013–June 2016
	Misr Hytech Seed Int. S.A.E. and NGO partner Ibtada	<i>Krishi Chetna</i> : Agricultural Development and Water Management in Alwar	May 2012–May 2016
	Mosaic India Private Limited and The Mosaic Company Foundation, USA	<i>Krishi Jyoti</i> : Agricultural development, water management and support to schools	September 2008–April 2018
Communications	National Bank for Agriculture and Rural Development (NABARD)	Enhancing productivity of lead crops (mustard and wheat) through sustainable agricultural practices	November 2012–November 2015
	Commonwealth Educational Media Centre for Asia (CEMCA)	Community Learning Programme through community radio, <i>Alfaz-e-Mewat</i> FM 107.8	January–May 2015
	Directorate of Advertising and Visual Publicity (DAVP)	<i>Beti Bachao, Beti Padhao</i> campaign on radio	January–March 2015
	DAVP	Drinking water supply campaign on radio	January–February 2015
	Haryana State Rural Livelihood Mission	Making and broadcasting programs to spread awareness about <i>Aajeevika</i> mission through radio	July–October 2014
	Ministry of Panchayati Raj, Gol	20 episodes on Panchayati Raj awareness	February 2014–August 2015
Good Rural Governance	Mudra Group	Energy conservation- <i>Pahal</i> campaign	January 2015
	Kanti Mohan Rustagi Fund, India	Ram Avtar Rustagi life skill education centers	March 2015–February 2018
Rural Research	Swades Foundation	Training of trainers on good governance	Since September 2014
	York University, Canada grant with Social Sciences and Humanities Research Council of Canada	Living with climate change: Mapping experience and adaptation in select locations in India	August 2013–July 2015
	Niti Aayog, Gol	Identifying backwardness of Mewat region in Haryana: A block level analysis	March–November 2014

¹ Millennium Alliance partners include United States Agency for International Development, United Kingdom Department of International Development, Department of Science and Technology, Government of India, ICICI Foundation, Innovative Change Collaborative, and WISH Foundation.

FOUNDER TRUSTEES

SURINDER (SURI) M. SEHGAL



Surinder (Suri) M. Sehgal, PhD, is cofounder and chairman of Board of Trustees of S M Sehgal Foundation; founder and chair of Misr Hytech

Seed, Egypt, Hytech Seed, India, and Sehgal Foundation in the USA; founder of William L. Brown Center for Economic Botany at the Missouri Botanical Garden, St Louis, Missouri, and emeritus trustee of the Garden.

He served 24 years as president of overseas operations and vice president, Pioneer Hi-Bred International; in executive positions at Plant Genetic Systems, Belgium; Hoechst Schering AgrEvo, Germany; and as founder, with his wife Edda, in Proagro Group, in India.

EDDA G. SEHGAL



Edda G. Sehgal, educated at Hohenstaufen-Gymnasium, Goppingen, Germany, is cofounder and trustee of the Sehgal Foundation in the

USA and S M Sehgal Foundation in India. With her husband Suri, she cofounded and served actively on the board of Proagro Group in India and of Global Technologies Incorporated, USA, from 1990 to 1998.

BOARD OF TRUSTEES AND COUNCIL OF ADVISORS

BOARD OF TRUSTEES

Kamal Bawa, PhD, distinguished professor of biology, University of Massachusetts-Boston, and founder-president of the Ashoka Trust for Research in Ecology and the Environment.
Ganesan Balachander, PhD, director, Ashoka Trust for Research in Ecology and the Environment, Bangalore, India, and member of Consortium Board of the Consultative Group on International Agricultural Research (CGIAR).
Ben Sehgal, PhD, member of the board of directors of Sehgal Foundation, USA, and board member of the William L. Brown Center at the Missouri Botanical Garden, St. Louis, Missouri, USA.
Rajat Jay Sehgal, executive vice president of Sehgal Foundation and managing director of Hytech Seed India Private Limited; former managing trustee and executive director of the Sehgal Foundation.
Suhas P. Wani, PhD, regional theme coordinator (Asia) and principal scientist (Watersheds), Global Theme on Agro Ecosystems, ICRISAT.

COUNCIL OF ADVISORS

M. D. Asthana, Indian Administrative Service officer, ret'd., served on the Council for Social Development from 2002–04.
Nishat Farooq, director, ret'd., State Resource Centre, Delhi, which included the National Nodal Centre for Gender Planning; member of the National Book Promotion Committee, Ministry of Human Resource Development; independent consultant for UNESCO, NEUJ (Japan) and NGOs.
Amitabh Kundu, PhD, chairperson of the Technical Advisory Committee on Housing Start-up index at RBI and Committee to Estimate Shortage of Affordable Housing, Government of India; former member of National Statistical Commission Government of India; former dean, School of Social Sciences, JNU; and former director, National Institute of Urban Affairs, Indian Council of Social Science Research and Gujarat Institute of Development Research.
Jan Leemans, PhD, cofounder of Maize Technologies International NV, former research director of Plant Genetic Systems, Belgium; former board member of Hoechst Shering AgrEvo, Germany and Nunza, The Netherlands, CropDesign, Belgium; and the Flemish Institute for Biotechnology, Belgium.
Takafumi Matsui, PhD, professor emeritus, University of Tokyo, and director of the Planetary Exploration Research Center at Chiba Institute of Technology.
Ajay Kumar Pandey, MPhil, LLM, associate professor and executive director of Clinical Programmes, Jindal Global Law School, Sonipat, Haryana.
Anita Roy, president, Doctor on Call Pvt. Ltd., New Delhi; deputy police commissioner, New Dehli; vice president, Business Development for Tata Housing.
Bhamy Shenoy, PhD, activist with Mysore Grahakara Parishat, Pratham, and other NGOs.
Raman K. Sehgal, MBA, managing director and a member of the Board of Directors of Misr Hytech Seed International, Egypt, and a member of the Board of Directors of Hytech Seed, India.
Gensuke Tokoro, president and CEO of aRigen Pharmaceutical, Inc., Japan; honorary professor, Institute of Innovation Research at Hitosubashi University, Japan.
S. K. Vasal, PhD, plant breeder and geneticist from CIMMYT, World Food Prize laureate, and recipient of Dr. M. S. Swaminathan Award for Leadership in Agriculture.

TEAM

RURAL DEVELOPMENT (GURGAON)

Devika Batra, project leader, Projects
Sonal Birla, senior research associate, Rural Research
Sonia Chopra, communications associate
Heena Chugh, accountant
Pankaj Gaur, accounts officer
Anjali Godyal, group leader, Projects
Parth Gohel, project leader, Water Management
Debika Goswami, program leader, Governance and Policy Advocacy
Arti Manchanda Grover, program leader, Communications
Susmita Guru, social scientist, Rural Research
Rukhsat Hussain, senior research associate, Rural Research
Vikas Jha, group leader, Governance and Policy Advocacy
Ramesh Kapahi, director, Finance and Administration
Sam Kapoor, manager, Resource Mobilization and Partnerships
Shruti Kapoor, assistant program leader, Strengthening Village Level Institutions
Pawan Kumar, program leader, Agricultural Development
Aparna Mahajan, director, Resource Mobilization and Partnerships
Anjali Makhija, group leader, Strengthening Village Level Institutions
Bhawna Mangla, senior research associate
Pradeep K. Mehta, group leader, Rural Research
Prasant Mohanty, project leader, Agricultural Development
Pooja O. Murada, director, Communications
Navneet Narwal, program Leader, Governance and Policy Advocacy
B.R. Poonia, program leader, Strengthening Village Level Institutions
Jagdish Prasad, administration manager
Arvind Rana, consultant, Projects
Padmavathi S., professional assistant to the CEO
Salahuddin Saiphy, program leader, Water Management
Niti Saxena, senior scientist, Rural Research
Richa Saxena, research associate, Rural Research
Jane E. Schukoske, chief executive officer
Hari Bhagwan Sharma, documentation consultant, Rural Research
Lalit Mohan Sharma, director, Adaptive Technologies
Manoj Sharma, manager, Information Technology
C. Shekhar, manager, Accounts
Ranjan Singh, manager, Web and Designs
Sumathi Sivam, projects associate
Saurabh Sood, assistant program leader, Adaptive Technologies
Saurabh Srivastava, program leader, Strengthening Village Level Institutions

SUPPORT TEAM (GURGAON)

Ram Bahadur, Kuldeep Chand, Arvind Kumar, Jitender Kumar, Ram Krishan, Laxman, Arjun Singh, Shoorveer Singh, and Surender Singh

CROP IMPROVEMENT RESEARCH (HYDERABAD)

P. Vani Sehkhari, senior scientist
S. V. Manjunatha, scientist
Ganesh Patil, special project scientist

SUPPORT TEAM (HYDERABAD)

K. Chandrasekhar, Syed Ghouse, G.P. Shravan Kumar, and C. Venkatesh

FIELD TEAMS

Sehgal Foundation field teams work in the districts of Mewat, Haryana; Alwar, Rajasthan; and Samastipur, Bihar.

*Team members are listed as of date 31 August, 2015