



SEHGAL
FOUNDATION

Annual Report 2022–2023



4.06 million
people reached

1,959
villages

56
districts

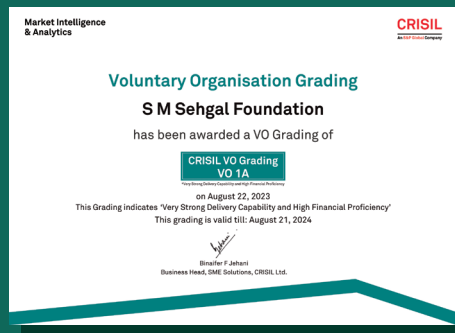
12
states

Vision

We envision every person across rural India empowered to lead a more secure, prosperous, and dignified life.

Mission

Our mission is to strengthen community-led development initiatives to achieve positive social, economic, and environmental change across rural India.



Message from the Founder

This G20 summit, under India's stewardship, adheres to the theme *Vasudhaiva Kutumbakam* (One Earth, One Family, One Future). This concept emphasizes the importance of recognizing the interconnectedness of humans, animals, the planet Earth, and the future of all. When I consider this farsighted vision, I appreciate that it highlights the shared value and interdependence of all life and the world we inhabit.

India is known to prioritize moral values and noble righteousness. Above all, we know that the development of our society lies in togetherness. I firmly believe that prioritizing a vision of "the world as one large family" is paramount in attaining the United Nations Sustainable Development Goals (SDGs). Collective participation is the base of the core values of S M Sehgal Foundation (SMSF), which my wife Edda Sehgal and I established in 1999. Our work connects with the theme because it is a prime example of the global initiative "LiFE" (Lifestyle for Environment), which demonstrates the significance of making environmentally sustainable and conscientious lifestyle decisions to create a cleaner and greener future.

As we move closer to the 2030 SDG target, it is pivotal to see India through a rural lens to identify and bridge the gaps hindering our mission of becoming a sustainable nation.



As an organization working to empower rural India, we will continue to actively contribute to promoting sustainable development to bring about positive social transformation in rural areas. We see the positive results of collaborating closely with local communities to enhance rural India's ability to tackle global water and food security challenges. We will continue to prioritize local participation, empower women and girls, and address any gaps that may hamper India's progress toward achieving sustainable development goals.

Deeds carry greater weight than words, and S M Sehgal Foundation teams are an example of this rule. We work as we live, through accelerated, resilient, and inclusive growth for the

last-mile beneficiary impact. Our work is rooted in a community-driven approach to furthering sustainability. As awareness grows and engagement in local participation increases, communities take charge upfront, playing an active role in social and environmental change through an integrated approach from the ground level. This is the power we hold as a society to drive change on a mass level as one whole family. It is our privilege to contribute to assisting individuals, society, and the environment, fulfilling the G20 Presidency, of the beginning of *Amritkaal*, and for India to become a futuristic, prosperous, inclusive, and developed society. ■

Suri Sehgal
Founder and chairman

**Our Programs, Impact, and
Footprints of Empowerment**

Water Management	6
Agriculture Development	8
Transform Lives <i>one school at a time</i>	10
Local Participation and Sustainability	12
Outreach for Development	14
Rural Research and Development	16
Partners and Projects at a Glance	18
Financials	21
Awards and Affiliations	23
Board of Trustees	24
Council of Advisors	25
Project Offices	26





Water Management

Building Water Conscious Communities



Alignment with SDGs



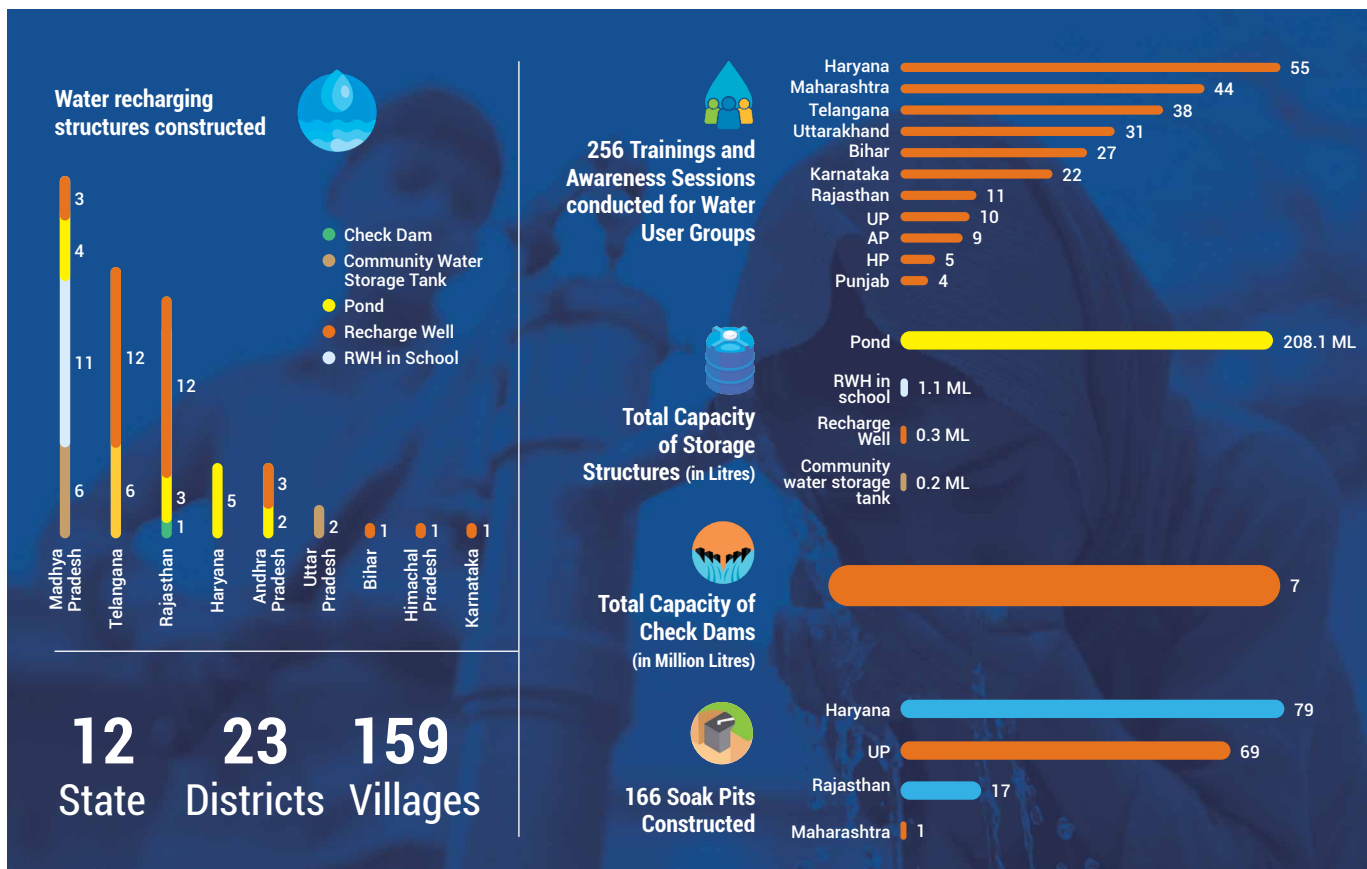
In the fiscal year 2022-23, the Water Management program significantly expanded its reach, impacting 12 states, 23 districts, and 159 villages. The program successfully addressed water challenges and promoted sustainability through various initiatives, including the construction of 8 community water storage tanks, the restoration of 53 ponds and recharge wells, and the construction of a check dam to ensure groundwater recharge. Furthermore, roof water harvesting systems were installed in 16 schools to enhance water access and creating awareness on environmental issues for educational purposes. These strategic actions not only alleviated water scarcity issues but also fortified long-term resilience within the target areas.

To ensure lasting success, we conducted capacity-building sessions and community awareness campaigns, empowering communities with vital skills for effective water resource management.

Footprints of Empowerment



Village Guwada is one of the six villages of Chula panchayat, in Alwar district, Rajasthan. The 350 families who live here are entirely dependent on agriculture for livelihood. S M Sehgal Foundation constructed a check dam across the stream. Soon after, the monsoon started, and the villagers observed that the check dam, which had a capacity of 33 million liters (about 5 feet in depth) filled up and emptied four times recharging the local aquifer, indicating that about 132 million liters of water had percolated into the ground. The three farmers whose homes are close to the check dam reported that the water level in their wells had come up significantly. The water level which were at a depth of about 125 feet earlier was found at about 95 feet. Village Development Committee member Mahesh Gurjar said, "My village is happy with this development, and this is an investment for our future." Former sarpanch Ramavatar Gurjar, said, "On behalf of my whole community, I am thankful that the project selected our village for its development work."





Agriculture Development

Helping Farmers Sustainably Produce More




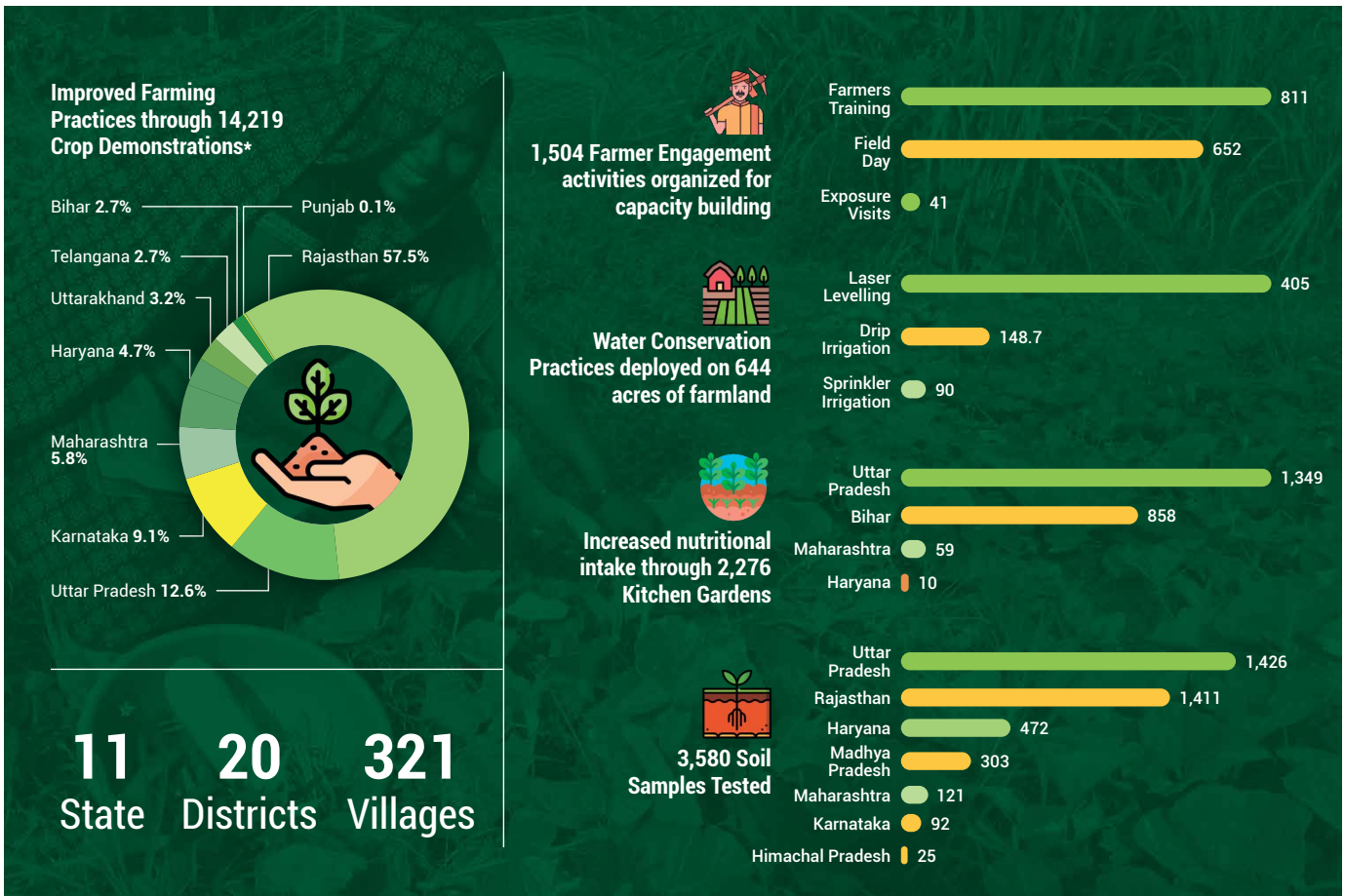
Alignment with SDGs



In 2022-23, S M Sehgal Foundation's Agriculture Development Program remained steadfast in promoting sustainable livelihoods in India, particularly focusing on climate-resilient farming practices. A cornerstone was soil testing, with over 35,000 samples analysed in 11 states, spanning 20 districts and 321 villages. This data-driven approach enabled tailored farming strategies, optimizing soil fertility and crop yields. Our holistic approach covered soil health, climate-smart techniques, crop management, input efficiency, small-scale mechanization, water-efficient irrigation, horticulture, livestock care, and ICT integration. Through these efforts, we empower farmers, including women, to thrive in evolving environmental conditions while contributing to a resilient Indian agriculture sector.

Footprints of Empowerment

Ajay Kumar, from Undi village, Mathura district, Uttar Pradesh, was a recipient of a multi-crop reaper machine. In March 2022, when the multi-crop reaper was handed over to him, he installed it on his tractor. The machine's performance on two acres of his wheat farm built the machine's demand in his village. Within five days, he recovered his invested amount of INR 22,000; and by April 12, 2022, he harvested fifty-eight acres of land growing wheat. He charged INR 1,400 per acre; the gross earning was INR 81,200.

*Across 13852 acres



Transform Lives *one school at a time*

Providing
better learning
environment for
schoolchildren



Alignment with SDGs



Transform Lives *one school at a time* program persistently enhanced rural school children's education. Prioritizing safe water, better sanitation, and conducive learning, it also provided digital and life skills training. The commitment extended to increasing enrollment, reducing dropouts, and promoting girls' education via active engagement with parents, teachers, and students. Empowering School Management Committees (SMCs) improved school functioning. The Transform Lives *one school at a time* program expanded to 8 states, 14 districts, and 25 schools, benefiting 8,791 students. It emphasized bridging the digital divide with digital literacy and local functionary training, ultimately contributing to progress and development in rural communities.

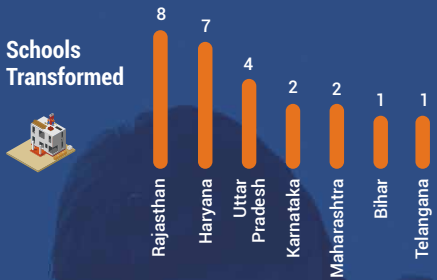
Footprints of Empowerment



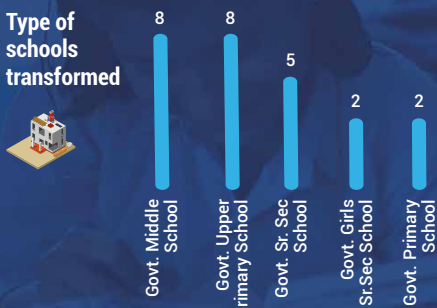
Sushmita Khandagle is an eighth-grade student at Zila Parishad Higher Primary School in a small village called Shirodi in Aurangabad district, Maharashtra. The family earns only about Rs. 25,000 annually from subsistence farming. The low economic situation kept Sushmita from attaining any opportunities to learn computer skills. She seized the first chance to enhance her learning through digital and life skills awareness trainings. Sushmita and other students then participated in the Dr. C V Raman Scholarship Examination. She impressed everyone by applying herself through her already-established email account, allowing her to apply quickly. This achievement gave her a morale boost and appreciation from other students, as she earned digital and life skills awareness.



Schools Transformed

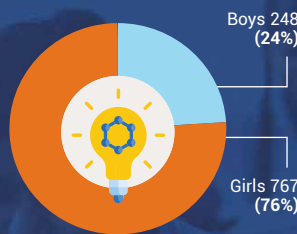


Type of schools transformed

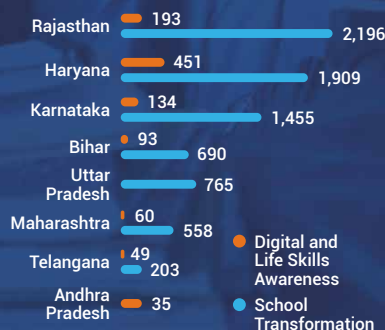


8 States Transformed
14 Districts Transformed
25 Schools Transformed
8,791 Students Reached

1,015 students trained in Digital and Life Skills Awareness



8,791 Students Reached



15 Local Committees Trained



243 Local Functionaries Trained on School Maintenance and Sustainability



● Digital and Life Skills Awareness
 ● School Transformation



Local Participation and Sustainability

Building capacities for inclusive and sustainable development



महिला नेतृत्व स्कूल
Women's Leadership School



Alignment with SDGs



Expanding our efforts, our programs reached 12 states, 25 districts, and 205 villages in 2022–23, extending the benefits of our local participation and sustainability initiatives. This encompassed capacity building for various stakeholders, including farmer groups, village development committees, women leadership schools, district legal services authorities, water user groups, self-help groups, and numerous villagers, including those in gram panchayats and anganwadis. Our comprehensive approach seeks to empower communities, with a special emphasis on women, enabling them to thrive amid changing environmental conditions, while simultaneously strengthening village-level institutions and promoting sustainability across various facets of their lives.

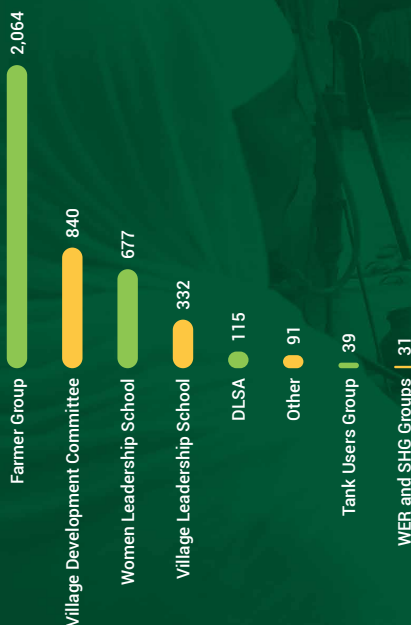
Footprints of Empowerment



In Telangana, an exposure visit to ICRISAT, Patancheru, and Center of Excellence (COE) of Vegetables and Flowers, Jedimetla, was organized for thirty women leaders from UGI villages. The women learned about the contribution of ICRISAT in the development of hybrid varieties of maize crops, water management, restoration techniques, various vertical farming methods used for vegetable cultivation, and cultivation techniques for kitchen gardens.



Capacity Building for Members of Community-Based Institutions

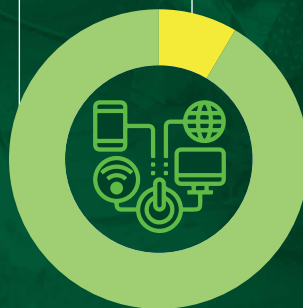


12 State
25 Districts
205 Villages

Digital Information & Resource Centers, 9,598 Calls attended and Assistance Provided

No. of Calls received
8,778 (91.5%)

No. of Visitors
820 (8.5%)



1,426 Villagers got Access to Benefits of Government Programs



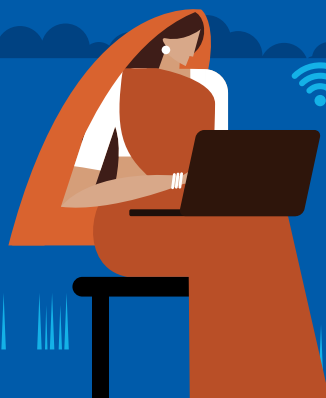
18 Villages benefited through Development of Public Assets in Project/With Local Institutions





Outreach for Development

Facilitating development communication for behavior change



In 2022–23, Outreach for Development initiatives continued to empower rural communities and drive positive social change. The approach embraced a diverse rural community media mix, featuring the influential rural community radio station *Alfaz-e-Mewat* (now, *CR Connect*) alongside social media and various print, visual, and interactive formats. The objective remained the dissemination of reliable, timely information to encourage dialogue and empowered behavior. In 2022, the community radio station extended its broadcast to 13 hours daily, reaching 225 villages in Haryana. A noteworthy relocation to the village of Naugaon expanded its reach to include Nuh in Haryana and Alwar in Rajasthan. This strategic move aimed to capture a broader spectrum of community voices, both old and new, further empowering rural communities to take charge of their development and drive positive transformations.

Footprints of Empowerment



Women broadcasters play an active role by inviting women to participate in conversations about local matters and stories of empowerment. In an episode of *Saaf Safai and Sehat* (An *Alfaz-e-Mewat*, now *CR Connect*, program on health and hygiene), Kalsum shared her viewpoint on the importance of women's health and the work done by ASHA workers in promoting hygiene practices and the importance of nutritious food for children, especially young girls. The ASHA workers (*sahelis*) serve as a knowledge chain, educating the village people on health and hygiene and providing women a platform to speak and share their concerns freely.



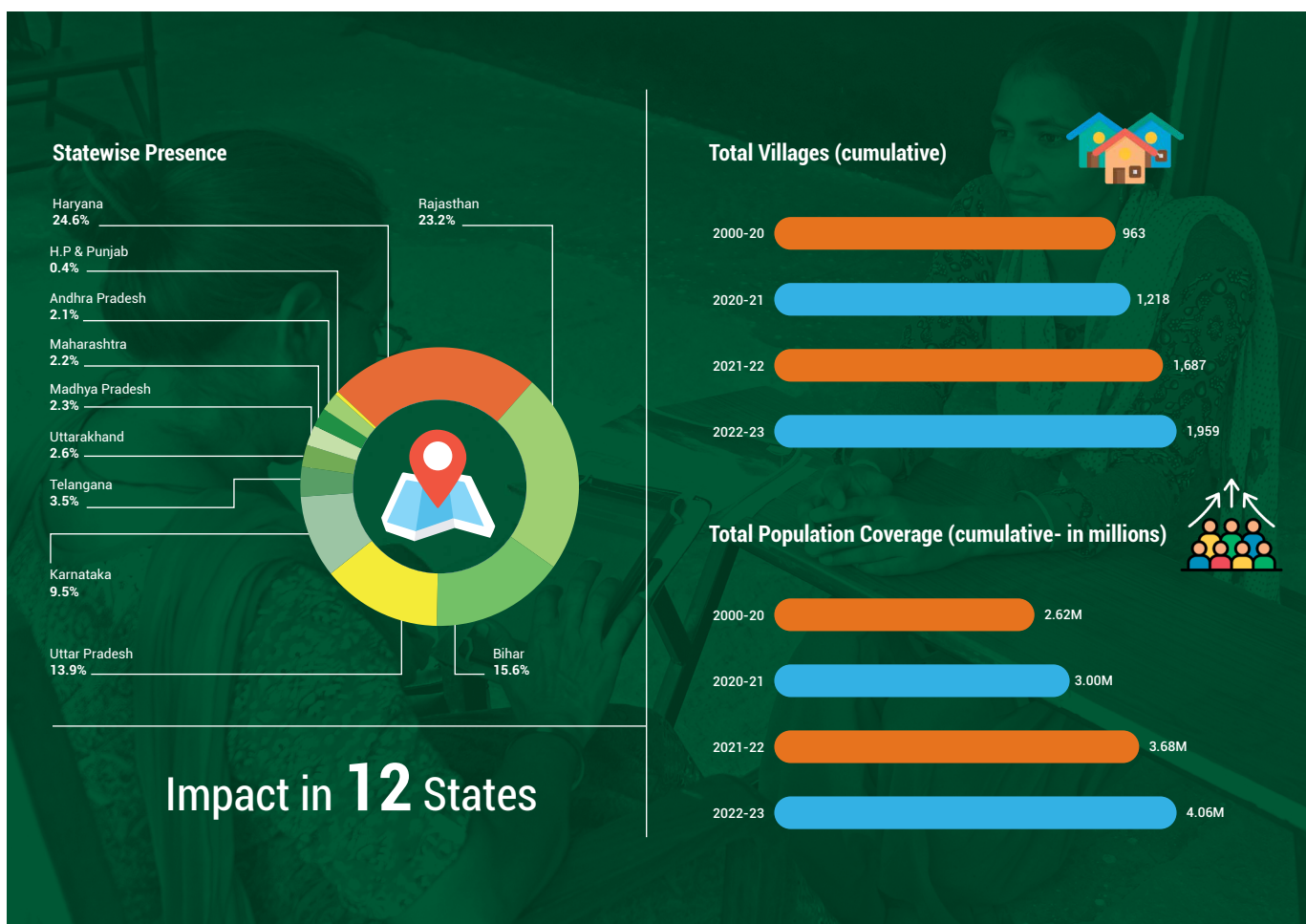


Rural Research & Development

Informing
action,
outcomes,
and learning.



In the context of rural communities, the SMSF Rural Research and Development Program plays a crucial role in maximizing the effectiveness of poverty alleviation initiatives. This is achieved by employing participatory research and impact evaluation as practical tools to inform actions, outcomes, and learning. The focus on integrating all aspects of the research process undertaken by the S M Sehgal Foundation includes needs assessment, baseline surveys, midterm assessments, and sustainable impact evaluations (SIA).



Partners and Projects at a Glance

Our partners contribute to the collective strength.

Partnerships facilitate knowledge sharing, technology transfer, and joint implementation for development in rural communities. With support from donors and partners worldwide, SMSF programs address the need to focus on capacity-building initiatives and partnerships to promote sustainable practices for integrated rural development.

Partner	Project	Location
Ashland Specialty Ingredients G.P.	Sustainable Guar Project	Ganganagar, Rajasthan
BMW India Foundation	Water for Future	Nuh and Sohna, Haryana
Canpack	Gram Unnayan	Nuh, Haryana
Crossing Borders	Women Empowerment in Local Development	Muzaffarpur, Bihar
DCB Bank Limited	Project Jal Sanchay	Panna, Madhya Pradesh
Global Water Challenge	WASH Project	Aurangabad, Maharashtra
Godrej & Boyce Mfg. Co. Ltd.	Pragati	Fatehgarh Sahib, Punjab
Greenlam Industries Limited	Water Conservation in Behror	Alwar, Rajasthan
	Water Conservation in Nalagarh	Solan, Himachal Pradesh
Guru Krupa Foundation	Digital and Life Skills Awareness for Youth - Saksham	Anantapur, Andhra Pradesh; Kolar, Karnataka; and Aurangabad, Maharashtra
Gwalior AlcoBrew Private Limited	Water Conservation	Gwalior, Madhya Pradesh
HDFC Bank Ltd	HDFC Parivartan	Nuh, Haryana; Mahendragarh, Haryana; Mathura, Uttar Pradesh; Champawat, Uttarakhand
Hindustan Coca-Cola Beverages Pvt. Ltd.	Water Conservation	Bangalore Rural, Karnataka
Hytech Seed India Ltd.	Empowerment and capacity building of women farmers	Medak and Siddipet, Telangana



Partner	Project	Location
Individual Donors	Transform Lives	Nuh, Haryana; Alwar, Rajasthan; Mathura, Uttar Pradesh; Medchal-Malkajgiri, Telangana; Samastipur, Bihar; Aurangabad, Maharashtra; Chikaballapur, Karnataka
John Deere India Pvt. Ltd.	Livelihood Improvement through Sustainable Agriculture (LISA)	Muzaffarnagar and Sitapur, Uttar Pradesh
	Integrated Village Development Project (IVDP)	Dewas, Madhya Pradesh
Knorr Bremse	Rejuvenation of Baghola Pond	Palwal, Haryana
Lady Bamford Charitable Trust	Strengthening Communities on Environmental Sustainability	Jaipur, Rajasthan & Palwal, Haryana
LIC Housing	HRIDAY	Nuh, Haryana
Marsh McLennan	Water Conservation	Nuh, Haryana
Mosaic Foundation	Krishi Jyoti	Alwar, Rajasthan; Prayagraj, Uttar Pradesh; Aurangabad, Maharashtra; Kolar, Karnataka
Nestle	Vridhhi	Nuh, Haryana
NVIDIA	Water Conservation	Kolar, Karnataka
Paytm Payments Bank Limited	Digital and Life Skills Awareness for Adolescent Girls	Samastipur, Bihar
Pernod Ricard India Foundation	Samridhi	Alwar, Rajasthan
	Gram Unnati	Meerut, Uttar Pradesh
	Neer Sanrakshan	Gwalior, Madhya Pradesh
		Sangareddy, Telangana
		Medak, Telangana
		Krishna, Andhra Pradesh
Bangalore Rural, Karnataka		
Gram Utkarsh	Kanpur Dehat, Uttar Pradesh	

Partner	Project	Location
PNB Housing Finance Ltd.	Jal Khushaali	Gwalior & Morena, Madhya Pradesh
	PNB Housing Ki Paathshaala	Nuh, Haryana
The Coca-Cola Foundation	Jaldhara	Aurangabad, Maharashtra
TLG India Private Limited & Publicis Sapient	Krishi Samridhhi Gram Uday	Nuh, Haryana
United Breweries Limited	Water Conservation	Alwar, Rajasthan
	Jal Sanchay	Bangalore Rural, Karnataka
Walmart Foundation	Promoting sustainable agriculture with effective Crop Residue Management (CRM) to protect environment	Kaithal and Kurukshetra, Haryana
	Bolstering Farmer Producer Organisations	Kolar, Karnataka and Prayagraj, Uttar Pradesh





Financials 2022–23

Abridged Balance Sheet as on 31st March 2023

Amount in '000

Particulars	Current Year Amount (Rs.)	Current Year Amount (US\$)	Prev. Year Amount (Rs.)	Prev. Year Amount (US\$)
Assets				
Fixed Assets	2,36,162	2,893	3,26,046	4,425
Loans and Advances	981	13	2,638	36
Current Assets	4,11,380	5,039	3,00,088	4,073
Total	6,48,523	7,945	6,28,772	8,534
Liabilities				
Corpus Fund	1	1	1	1
Current Liabilities	50,429	618	47,115	640
General Funds	5,98,093	7,326	5,81,656	7,893
Total	6,48,523	7,945	6,28,772	8,534

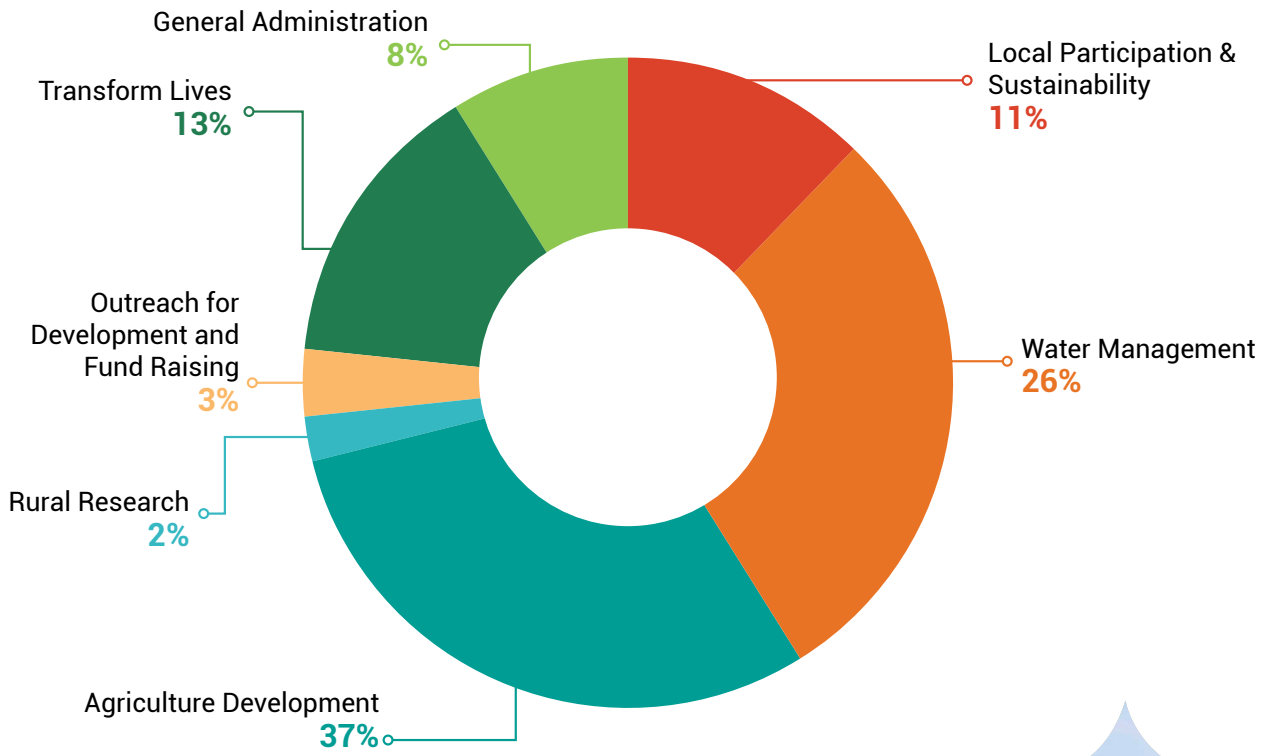
Abridged Income & Expenditure Account for the Year Ending 31st March 2023

Amount in '000

Particulars	Current Year Amount (Rs.)	Current Year Amount (US\$)	Prev. Year Amount (Rs.)	Prev. Year Amount (US\$)
Income				
Self Generated Income				
Rent, Interest and other receipts	48,923	600	43,726	594
Grants				
Indian Sources	3,54,351	4,340	2,21,229	3,003
International Sources	3,13,174	3,836	3,30,092	4,480
Total	7,16,448	8,776	5,95,047	8,077
Expenditure				
Program	6,38,778	7,824	4,95,546	6,725
Management*	40,789	500	30,611	416
Others (Depreciation)	20,445	251	17,599	239
Total	7,00,012	8,575	5,43,756	7,380
Deficit/Surplus	16,436	201	51,291	697

Exchange Rate (current year) INR 81.65/US\$ | * Including Building Maintenance expenses for the leased space.

S M Sehgal Foundation PROGRAM EXPENSES DURING FY 22-23 US\$ 8.14 MILLION (RS. 665 MILLION)*



*Excluding building maintenance expenses for the leased space and capex





Awards and Affiliations

- **Dr. Suri Sehgal** received Dr. M S Swaminathan Lifetime achievement award for leadership in agriculture by the Trust for Advancement of Agriculture Sciences.
- **Ms. Anjali Makhija**, CEO, reached the finals in The Amazing Indians Awards by *The Times Network*, specifically in the Rural Development category.
- **Ms. Geeta**, project coordinator at S M Sehgal Foundation, received Ek Naam Recognition from Apollo Tyres Foundation for her contributions in water management and sanitation initiatives.
- **Mr. Jay Sehgal** was bestowed with the India Association of Minnesota (IAM) Person of the Year Award for acknowledging his significant COVID relief initiatives through Sehgal Foundation USA. These efforts facilitated the provision of essential equipment to rural communities in India, made feasible by contributions from IAM and other donors in Minnesota.
- **SMSF** was presented with the Bhamashah Award by the Department of Education, Rajasthan, for its efforts in rural government schools as part of the Transform Lives *one school at a time* program.
- **SMSF** was honored with the ABSA Award for Agriculture Development during the Agri-Business Summit and Agri Awards.
- **SMSF's** *Alfaz-e-Mewat (CR Connect)* FM 107.8 won the National Community Radio Award for sustainability.

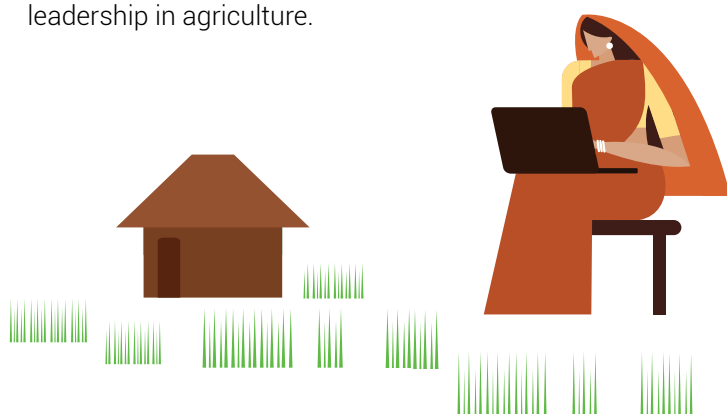
Board of Trustees

- **Surinder (Suri) M. Sehgal**, PhD, is cofounder and chairman of the Board of Trustees of S M Sehgal Foundation and Sehgal Foundation in the US; founder of William L. Brown Center for Economic Botany at the Missouri Botanical Garden, St Louis, Missouri, and an emeritus trustee of the Garden.
- **Edda G. Sehgal** educated at Hohenstaufen Gymnasium, Goppingen, Germany; cofounder of S M Sehgal Foundation in India and Sehgal Foundation in the US; and former board member of Proagro Group, India, and Global Technologies Incorporated, USA (1990–1998).
- **Ganesan Balachander**, PhD, former director of Ashoka Trust for Research in Ecology and the Environment, Bangalore, India, and member of the Consortium Board of the Consultative Group on International Agricultural Research (CGIAR).
- **Neelima Khetan**, visiting fellow, Brookings India; former Group CSR head, Vedanta Group; VP of CSR at Hindustan Zinc; director, CSR, and Sustainability, Coca-Cola India and South West Asia; India Country director, American India Foundation; CEO, Seva Mandir; acting director, Institute of Rural Management, Anand, and recipient of Lakshmi Pat Singhania-IIM Lucknow National Leadership Award and Maharana Mewar Award.
- **Anjali Makhija**, MA, CEO; certified corporate director, Institute of Directors (IOD); Leadership Foundational Principles certificate course by HarvardX; Life member of National Association of Professional Social Workers in India (NAPSWI), president of Haryana Agriculture Council of Women's Indian Chamber of Commerce and Industry (WICCI), Internal Committee member for Marks and Spencer India Sourcing Office, and member of advisory committee of University Outreach Program of Maharishi Dayanand University.
- **Bernd Uwe Sehgal**, PhD, member of the board of directors of Sehgal Foundation in the US, and board member of the William L. Brown Center at the Missouri Botanical Garden, St. Louis, Missouri, USA.
- **Rajat Jay Sehgal**, executive vice president of Sehgal Foundation in the US and former managing trustee and executive director of S M Sehgal Foundation.
- **Bhamy Shenoy**, PhD, associated with Mysore Grahakara Parishat, Pratham, and other NGOs.
- **Suhas P. Wani**, PhD, Research Program director, Asia Region, and director, ICRISAT Development Center, ICRISAT, Patancheru, Telangana, India.



Council of Advisors

- **Jan Dirk (JD) Geertsema**, author, management consultant, executive coach, and management trainer since 1997, works extensively with management teams in global business, including agriculture, airlines, automotive, biotechnology, chemical, food, graphic arts, manufacturing, and software engineering industries, and with governments of USA, Ukraine, and the Netherlands. JD teaches Leadership and Human Logic at various international universities. He has been supporting S M Sehgal Foundation since 2004, focusing on management and team development.
- **Jan Leemans**, PhD, is a member of the board of directors, Misr Hytech Seed International, Egypt; Solynta, Wageningen, The Netherlands; Agrosafve, Gent, Belgium; and former research director of Plant Genetic Systems, Belgium.
- **Arun Maheshwari** studied at IIT, Mumbai, and IIM, Kolkata, and in the US at Columbia, Stanford, and Wharton. He has worked for McKinsey as a consultant and for Fortune 500 companies, including Tata Consultancy Services, as a senior executive. He founded and managed two software companies in India (1996–2008). After retirement, he has served on multiple listed and private company boards.
- **Vyoma Nair** is executive board adviser to Nucleus, is an expert on international expansion who developed an integrated “one-stop shopping” service model covering multi-country HR, legal, accounting, tax, and compliance services for smaller US tech companies seeking international expansion. She worked with Redback Networks, RedHat Software, and Theorem Clinical Research.
- **Jane E. Schukoske**, BA, JD, LLM, is a higher education and development consultant based in the US. Former positions include executive director of the US-India Educational Foundation, associate professor at the University of Baltimore School of Law, and CEO of S M Sehgal Foundation (2011–16).
- **Raman K. Sehgal**, MBA, managing director and member of the Board of Directors of Misr Hytech Seed International, Egypt, and member of the Board of Directors of Hytech Seed, India.
- **Venkata Subbarao**, Kolli, PhD, is a strategic business leader with extensive experience in agriculture, biosciences, and life sciences, and a seasoned professional and a strategic thinker. He retired as regional president Corteva Agriscience and has served as vice chair for the Federation of Seed Association of India, president of the National Seed Association of India (2011–13), on CII Agriculture Council, and the FICCI Biotechnology Committee.
- **Gensuke Tokoro**, professor (special appointment) at the Institute of Innovation Research of Hitotsubashi University (2008–14); president and CEO of NAI, Inc., and Kyoto Biopharmaceuticals, Inc.; and board member of Institute for the Study of Panspermia and Astroeconomics.
- **S. K. Vasal**, PhD, plant breeder and geneticist from CIMMYT, World Food Prize laureate, and recipient of Dr. M S Swaminathan Award for leadership in agriculture.



Project Offices

Bihar

- Sharma Sadan, NH-28, Khabra, District Muzaffarpur, Bihar

Haryana

- Daal Mill, Ward No. 5 Biwan Pahari Road, Ferozpur Jhirka District, Nuh, Haryana
- Plot No. 567-P, Huda Phase-1, Narnaul District Mahendergarh, Haryana
- Yahuda Building, Ward no.5, Behind Bijli Ghar, Nuh, Haryana
- House Number 550 Ward Number 4 Sohna, Gurugram, Haryana
- House No - 1080/11, New Modal Town Colony Thand Road Kaithal, Haryana
- Db-164, Vijay Nagar Ward No-2 Tauru Nuh, Haryana
- House no. 2068, Ward no. 12, Gali no. 9, Shanti Nagar, Thanesar, Kurukshetra, Haryana

Karnataka

- BHIVE Workspace Whitefield Campus. Plot No. 77, Jbr Tech Park, 6th Rd, Whitefield, EPIP Zone, Whitefield, Bengaluru, Karnataka 560066
- #1244, Ground Floor, Opposite - St. Anne's primary school, Tekal road, P.C extension, Kolar, Karnataka-563101

Madhya Pradesh

- 27, Village Merkhedi, Dewas, Madhya Pradesh,
- 125, Vrindavan Dham, Madhya Pradesh Bhopal Corridor Road, Adarsh Nagar, Dewas, Madhya Pradesh 455001

Maharashtra

- House No. 2826, in front of Government Rest House Aurangabad Road, Phulambri, Dist. Aurangabad, Maharashtra 431111

Rajasthan

- Mohalla Kala Kuwa, Near Saini Dharamshala, Kanaha Tower, Main Road Alwar, Rajasthan 301001
- Rajasthan New Dhan Mandi Road, Near PNB Bank, Padampur, Sri Ganganagar, Rajasthan 335041
- 00, Indra Colony, Near Sarwan Cement Factory, in front of Chihkara Canteen, Alwar Road, Behror, Rajasthan 301701
- Community Radio Alfaz-e-Mewat FM 107, Agriculture Research Station, Village, Naugaon, Ramgarh Block, Alwar District, Rajasthan

Telangana

- Door no. 7-5/1/1 VTC Narsingee Chegunta Sub District, Medak District, Telangana

Uttar Pradesh

- 331/40 manjil nai bazaar, behind state Bank, Mewa lal ki bagiya, Naini prayagraj 211008
- House near Munna Market, Shergarh Tiraha, Chhata District, Mathura, Uttar Pradesh
- Ram Bhawan, Near Shiv Shakti Dharam Kanta, Bada Gaw Road, Maholi Sitapur UP 261141
- C-221, Awas Vikas Khatauli Tehsil Khatauli Muzaffarnagar, Uttar Pradesh
- Khalwa Thok, Village PO Rania, Tehsil Akbarpur, Kanpur, Uttar Pradesh 209304

Uttarakhand

- Shivansh Sadan, First floor, opposite KMVN TIC, Tanakpur Road, Champawat, Uttarakhand 262523





Reaching more people in 2023!

— We take pride in what we do; and we will impact even more lives in 2023. —

Discover more about us:



Learn about S M Sehgal Foundation and our journey.



Connect with us through social media.



Subscribe to our monthly newsletter.



Listen to our podcast.



SEHGAL
FOUNDATION

S M SEHGAL FOUNDATION
Plot No. 34, Sector 44
Institutional Area, Gurugram
Haryana 122 003, India
Tel: +91-124-474 4100, Fax: +91-124-474 4123,
Email: smsf@smsfoundation.org

S M Sehgal Foundation is a public charitable trust registered in India since 1999.
www.smsfoundation.org

TOGETHER
WE EMPOWER
RURAL INDIA

Learn more

